

Operating Manual

Level switch

as of version 1.0

GNS-SCV –W / -Z



WEEE-Reg.-Nr. DE 93889386

GREISINGER electronic GmbH

D - 93128 Regenstauf, Hans-Sachs-Straße 26

☎ +49 (0) 9402 / 9383-0 📠 +49 (0) 9402 / 9383-33 🌐 info@greisinger.de

Index

1 GENERAL NOTE	2
2 SAFETY	2
2.1 INTENDED USE	2
2.2 SAFETY SIGNS AND SYMBOLS	2
2.3 SAFETY GUIDELINES.....	3
3 PRODUCT SPECIFICATION	3
3.1 SCOPE OF SUPPLY	3
3.2 OPERATION ADVICE	3
3.3 MOUNTING AND MAINTENANCE	3
4 DIMENSIONS AND CONNECTIONS	4
5 RESHIPMENT AND DISPOSAL	4
6 SPECIFICATION	4

1 General Note

Read this document carefully and get used to the operation of the device before you use it. Keep this document within easy reach near the device for consulting in case of doubt.

Mounting, start-up, operating, maintenance and removing from operation must be done by qualified, specially trained staff that have carefully read and understood this manual before starting any work.

The manufacturer will assume no liability or warranty in case of usage for other purpose than the intended one, ignoring this manual, operating by unqualified staff as well as unauthorized modifications to the device.

The manufacturer is not liable for any costs or damages incurred at the user or third parties because of the usage or application of this device, in particular in case of improper use of the device, misuse or malfunction of the connection or of the device.

The manufacturer is not liable for misprints.

2 Safety

2.1 Intended Use

GNS-SCV is a capacitive level switch to offer a control of filling levels in liquids.

GNS-SCV-**W**: designed for use with water and conductive liquids.

GNS-SCV-**Z**: designed for use with oil and **non**-conductive liquids.

2.2 Safety signs and symbols

Warnings are labelled in this document with the followings signs:



Caution! This symbol warns of imminent danger, death, serious injuries and significant damage to property at non-observance.






Attention! This symbol warns of possible dangers or dangerous situations which can provoke damage to the device or environment at non-observance.



Note! This symbol point out processes which can indirectly influence operation or provoke unforeseen reactions at non-observance.

2.3 Safety guidelines

However, its trouble-free operation and reliability cannot be guaranteed unless the standard safety measures and special safety advises given in this manual will be adhered to when using the device.

1. Trouble-free operation and reliability of the device can only be guaranteed if the device is not subjected to any other climatic conditions than those stated under "Specification".
If the device is transported from a cold to a warm environment condensation may cause in a failure of the function. In such a case make sure the device temperature has adjusted to the ambient temperature before trying a new start-up.
2.  If there is a risk whatsoever involved in running it, the device has to be switched off immediately and to be marked accordingly to avoid re-starting.
Operator safety may be a risk if.
 - there is visible damage to the device.
 - the device is not working as specified.
 - the device has been stored under unsuitable conditions for a longer time.In case of doubt, please return device to manufacturer for repair or maintenance.
3.  Do not use these products as safety or emergency stop devices or in any other application where failure of the product could result in personal injury or material damage.
Failure to comply with these instructions could result in death or serious injury and material damage.
4.  This device must not be used at potentially explosive areas!
The usage of this device at potentially explosive areas increases danger of deflagration, explosion or fire due to sparking.

3 Product Specification

3.1 Scope of supply

- GNS-SCV
- Operating Manual

3.2 Operation advice

The GNS-SCV level switch has been designed to offer a very simple and safety control levels in liquids. The GNS-SCV is, dependent on the version, suitable for various materials.

- Water, conductive liquids (GNS-SCV-W)
- Oil, non-conductive liquids (GNS-SCV-Z)
- Solids in the form of powder and granules

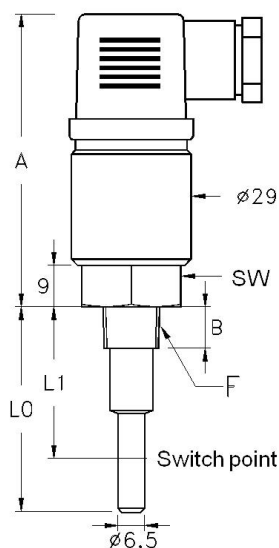
3.3 Mounting and Maintenance

Take care to use metal hexagonal part of the body during connection to the adaptors.

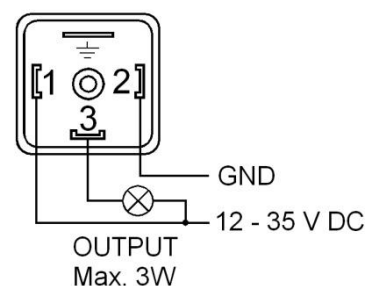
4 Dimensions and Connections

Dimensions [mm]

SW	A	B	L0	L1	F
24	74	10	50	40 ± 2	¼" NPT



Connection



5 Reshipment and Disposal

5.1 Reshipment



All devices returned to the manufacturer have to be free of any residual of measuring media and/or other hazardous substances. Measuring residuals at housing or sensor may be a risk for persons or environment.



Use an adequate transport package for reshipment, especially for fully functional devices. Please make sure that the device is protected in the package by enough packing materials.

5.2 Disposal



The device must not be disposed in the unsorted municipal waste! Send the device directly to us (sufficiently stamped), if it should be disposed. We will dispose the device appropriate and environmentally sound.

6 Specification

Body	Brass
Process connection	G ¼" NPT, Brass
Electrode	Cu-Zn
Electrode-coating	PTFE
Length of the electrode	50 mm
Max. medium temperature	-30 ... +125°C
Max. pressure	25 bar
Power Supply	12 ... 35V DC / 5 mA
Wiring	Angel plug (EN 175301-803/A)
Output	NPN, make contact
Contact rating	Max. 3W
Switching delay	4 sec.
Switching point	Vertical 40mm ± 2 mm
	Horizontal On axis of GNS-SCV